



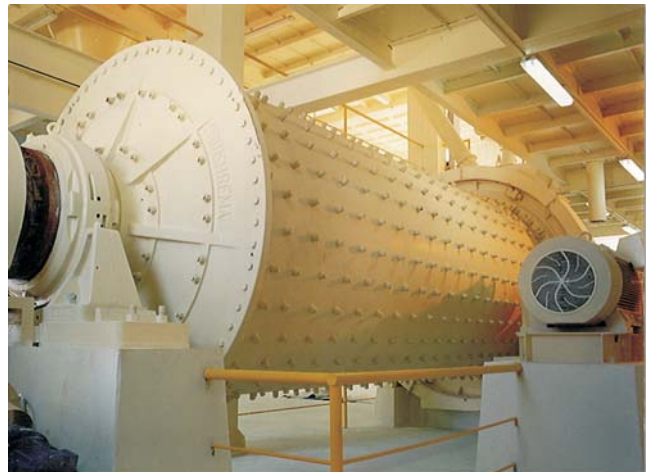
## Ball Mill

### Application:

- ▶ Mineral powders
- ▶ Construction materials
- ▶ Refractory materials
- ▶ Ceramic fillers
- ▶ Chemical products

### Performance:

- ▶ Drive power: from 15 to 1.000 kW
- ▶ Mill sizes: from Ø 1 m x 1 m length up to Ø 4 m x 8 m length



### Features:

- ▶ Robust construction with controlled manufacturing quality
- ▶ Various lining materials
- ▶ Various shapes and materials for grinding media
- ▶ Also special designs are possible
- ▶ Pre assembled for fast erection
- ▶ Low costs for foundation on site



### Typical Mill Configurations:

- ▶ Grate discharge ball mills
- ▶ Airswept ball mills
- ▶ Overflow discharge ball mills
- ▶ Conical airswept ball mills
- ▶ Conical overflow discharge ball mills
- ▶ End peripheral discharge rod mills